



# THE NEW POWER EQUATION

System i Navigator family applications

Rodrigo Villalobos Manzo

[rodrigo@mx1.ibm.com](mailto:rodrigo@mx1.ibm.com)

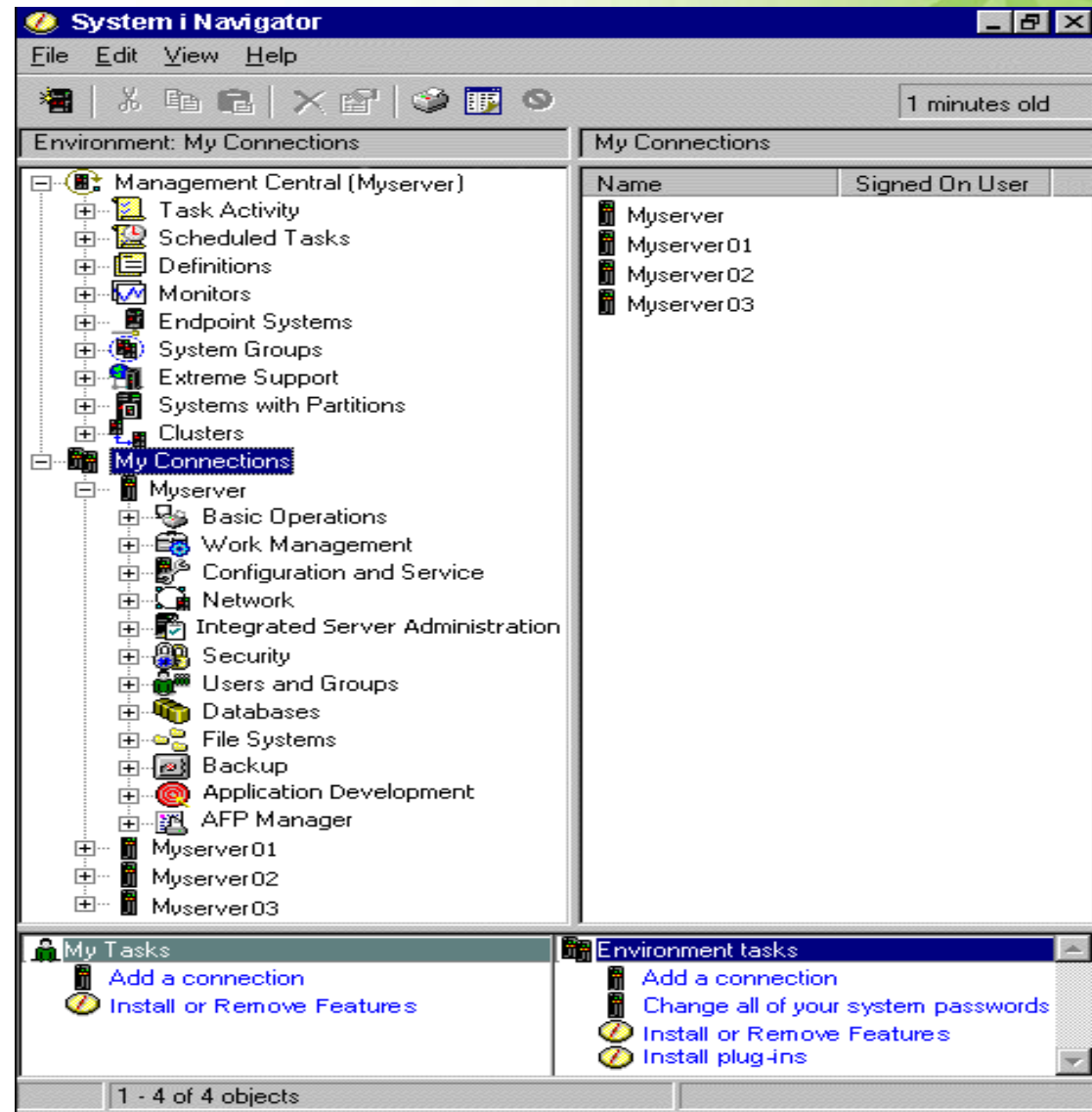
# Agenda

- **System i Navigator**
- **System i Navigator Tasks for the Web**
- **IBM Systems Director Navigator for i5/OS**

# System i Navigator

# System i Navigator – Introduction

- System i Navigator is a graphical interface for Windows clients
- Allows you to manage as many IBM i systems as desired



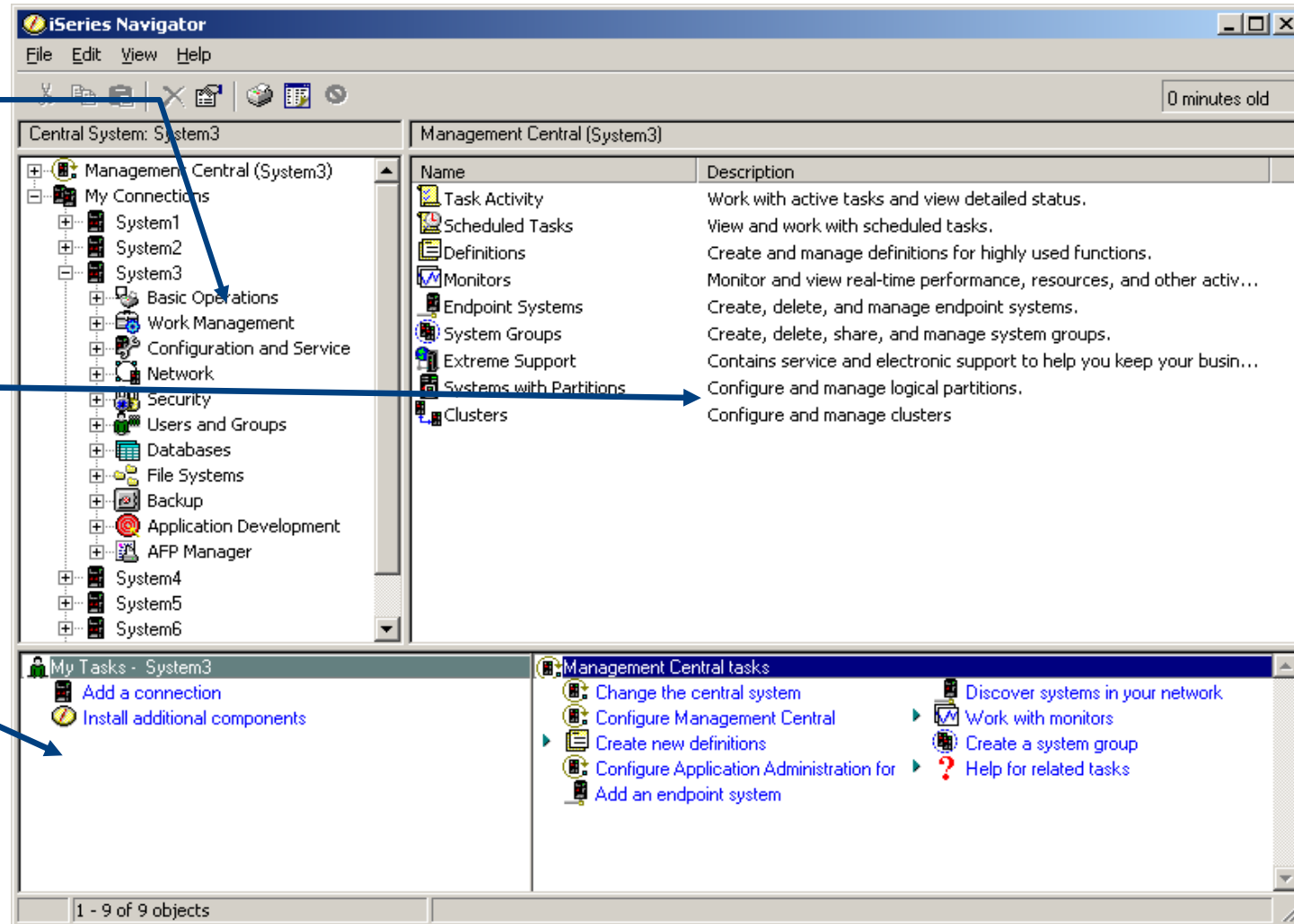
# System i Navigator – Interface

System i Navigator main window:

**Function tree**

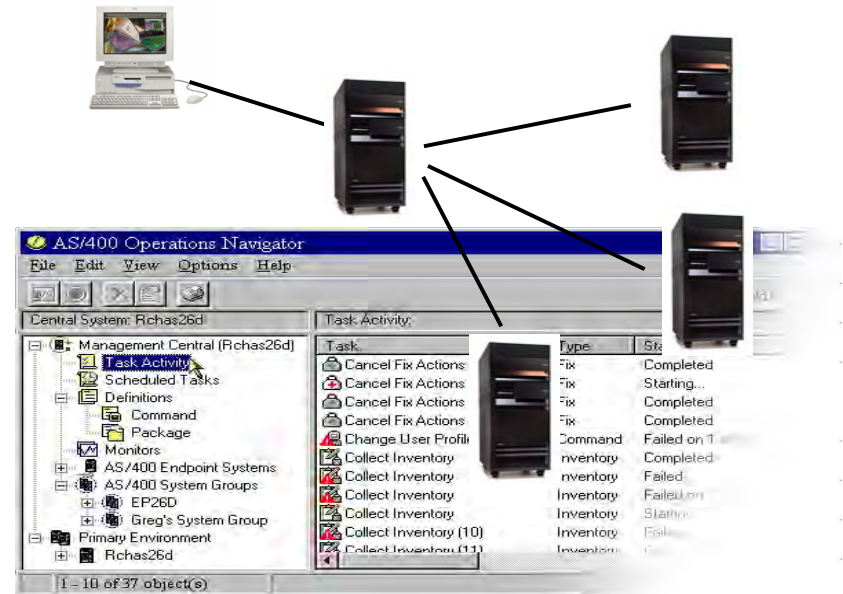
**Details pane**

**Taskpad**



# System i Navigator - Characteristics

- Modern technologies on user interfaces
- Manage multiple systems over a central system
- Reduce need to learn command interface
- Customize your views
- Create shortcuts
- Properties panels
- Pop-up menus
- Drag and Drop
- Auto-refresh
- Search lists
- Filter lists



# System i Navigator - History

11/08/1996:



# System i Navigator - History

02/27/1998:



# System i Navigator - History

05/21/1999:



# System i Navigator - History

07/28/2000:



# System i Navigator - History

05/25/2001:



# System i Navigator - History

08/30/2002:



# System i Navigator - History

06/11/2004:



# System i Navigator tasks for the Web

## System i Navigator – Evolution

- In V5R3 (06/11/2004) System i Navigator provided 46 individual tasks available through the Web

This application is called “**System i Navigator tasks for the Web**”

Category	Number of tasks
Basic Operations	5
Work Management	17
Configuration and Service	2
Database	21
General Purpose	1
<b>Total</b>	<b>46</b>

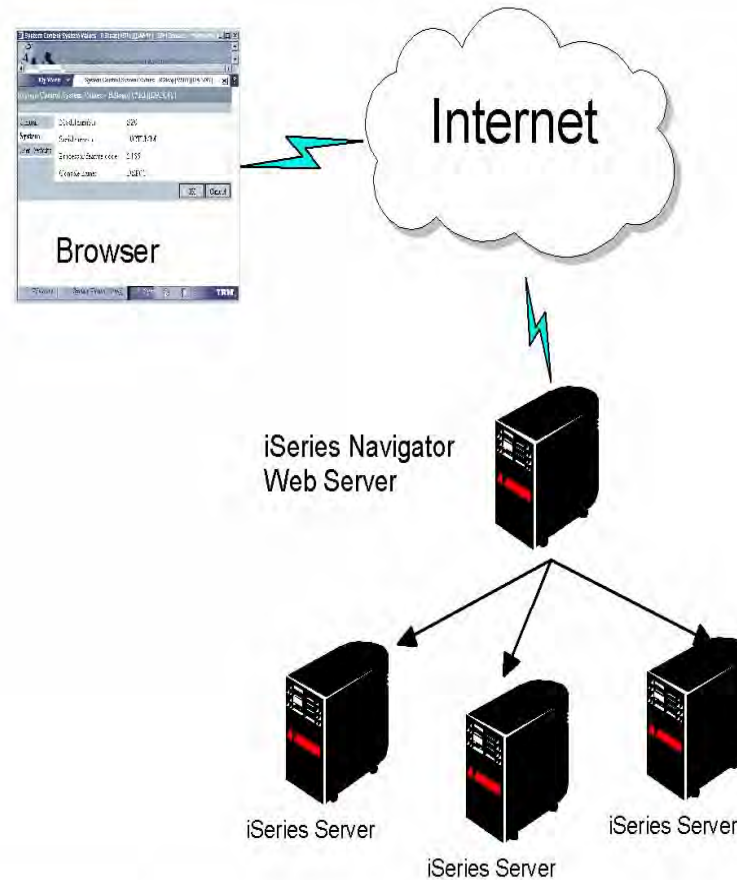
## System i Navigator – Evolution

- For **5.4** (02/14/2006), the number of tasks increased to 99. Two new categories were created for **Network** and **General purpose** tasks.

Category	Number of tasks
Basic Operations	25
Work Management	28
Configuration and Service	5
Database	31
Network	2
General Purpose	8
<b>Total</b>	<b>99</b>

# System i Navigator Tasks for the Web – Characteristics

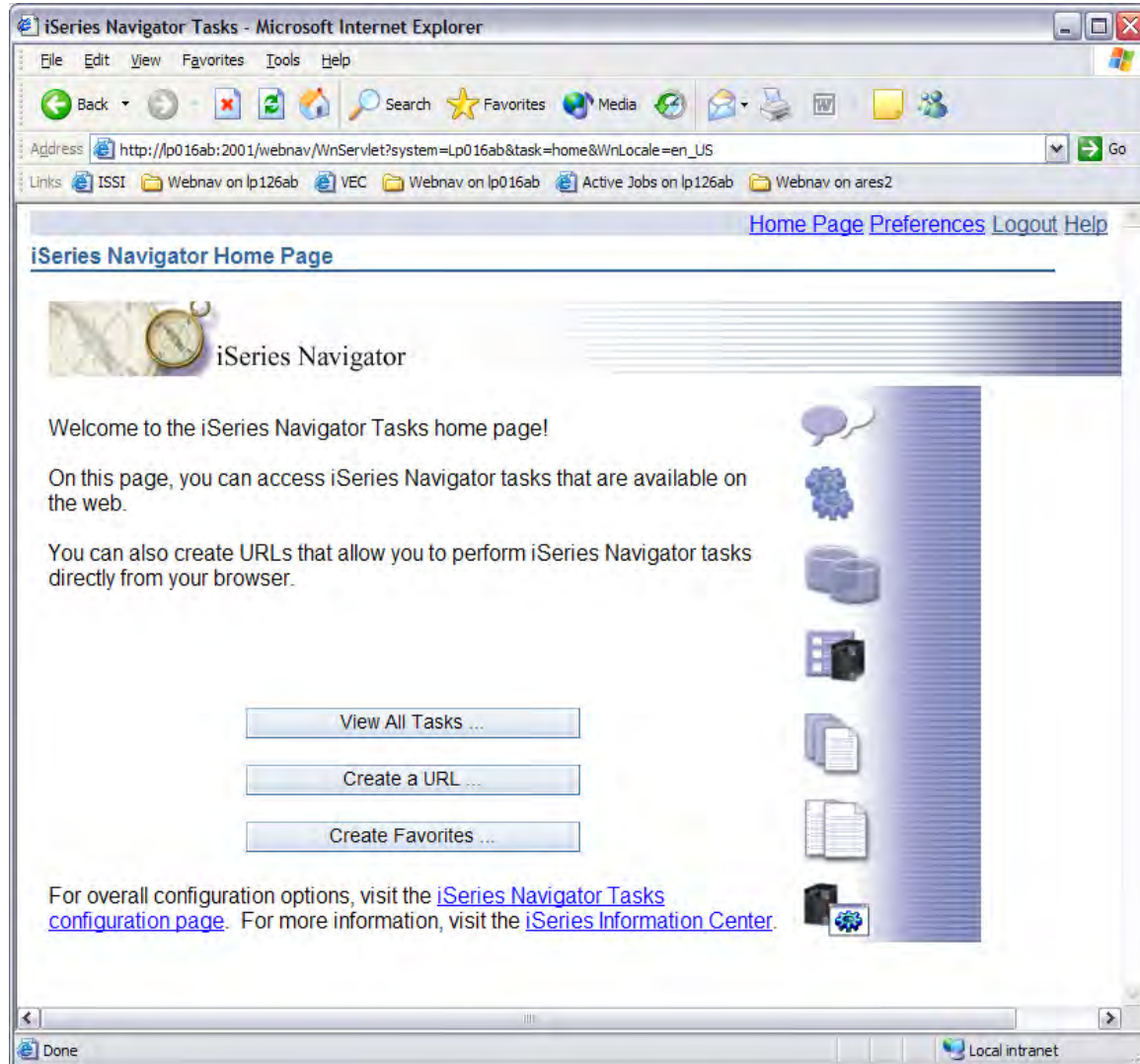
- Key tasks accessible through a web browser
- No additional cost
- No installation
- Access through port 2001
- SSL configurable
- Controlled access
- Source system to run a task on a target system



# System i Navigator Tasks for the Web - Access

You may access tasks in different ways:

- From the welcome page
- Through an specific url:  
<http://<webSystem>:2001/webnav/WnServlet?system=<system>&task=home>
- From the "View All Tasks" button
- From the browser's favorites



# System i Navigator Tasks for the Web - Interface



## System i Navigator Tasks

Collapse all groups

System i Navigator Task Groups	List Tasks	Action Tasks
▶ System		
▶ Basic Operations	▼ System Tasks	<a href="#">Disk Status</a> <a href="#">System Operator Messages</a> <a href="#">History Log</a> <a href="#">System Status</a> <a href="#">Run Command</a> <a href="#">Application Administration</a> <a href="#">Administration System Properties</a> <a href="#">Change Password</a>
▶ Work Management		
▶ Configuration and Service		
▶ Security		
▶ File Systems		
▶ Performance		
▶ Backup, Recovery, and Media Services for i5/OS		
▶ Database		
▶ Network		
▶ Journal Management		
▶ Users and Groups		
▶ Integrated Server Administration		
Page 1 of 1		

Close

# System i Navigator Tasks for the Web - Interface

## Active Jobs - Lp126ab

Elapsed time: 00:20:08

Refresh

Select	Job Name	Detailed ...	Current ...	Type	CPU...
<input type="checkbox"/>	Qzscsvr	Waiting for request	Quser	Prestart communications	0
<input type="checkbox"/>	Qct	Waiting for dequeue	Qsys	Subsystem	0
<input type="checkbox"/>	Qsysscd	Waiting for event	Qpgmr	Batch	0
<input type="checkbox"/>	Qejbas5	Waiting for dequeue	Qsys	Subsystem	0
<input type="checkbox"/>	Qejbmqlsr	Waiting for time interval	Qmqm	Batch immediate	0
<input type="checkbox"/>	Qjvaexec	Waiting for Java program	Qejbsvr	Batch immediate	0
<input type="checkbox"/>	Server1	Waiting for Java program	Qejbsvr	Autostart - Server	0.1
<input type="checkbox"/>	Server1	Waiting for Java program	Qejbsvr	Batch - Server	0

Page 2 of 37    2    Go    Total: 294    Filtered: 294    Displayed: 8    Selected: 0

- Action menu
- Customizable
- Search, include and columns options
- Toolbar
- Navigation bar
- Context menus (equivalent to popup menus)



# IBM Systems Director Navigator for i5/OS

# System i Navigator – Evolution

- In **6.1** (03/21/2008) “**IBM Systems Director Navigator for i5/OS**” was born
- **Integrated console** for **IBM i** management
- **System i Navigator tasks for the Web** still available

IBM Systems Director Navigator for i5/OS®

Welcome esperanz

Help | Logout

--- Select Action ---

Welcome - Lp02ut12.rchland.ibm.com

**Welcome to the IBM Systems Director Navigator for i5/OS** [About Console](#)

The IBM Systems Director Navigator for i5/OS provides an easy to use interface for the web-enabled System i management tasks, including all previous System i Navigator tasks on the web and 2001 port i5/OS tasks.

Expand i5/OS Management in the left-hand navigation area to get started.

To see the previous version of the 2001 port i5/OS tasks and where they are located now, click below.

[i5/OS Tasks Page](#)

## IBM Systems Director Navigator for i5/OS – What is it?

- Is the **new web console** included on the IBM i 6.1.
- Perfect for executing several tasks over a single system
- Over **300** tasks available

# IBM Systems Director Navigator for i5/OS – What it needs?

- Included on the IBM i with option 3 (5761SS1 0003). **No additional charge!**
- Requires the next products (all are pre-installed already on the i)
  - IBM HTTP Server for i5/OS 5761DG1
  - Qshell 5761SS1 option 30
  - Portable App Solutions Environment (PASE) 5761SS1 option 33
  - IBM Developer Kit for Java 5761JV1
  - J2SE 5.0 32 bit 5761JV1 option 8
  - IBM Toolbox for Java 5761JC1
  - Host Servers 5761SS1 option 12

## IBM Systems Director Navigator for i5/OS – Includes

- All the tasks from System i Navigator for the Web organized in **13 categories**
  
- Additional LPPs can be installed on this application
  - iHASM (IBM i High Availability Solutions Manager) 5761HAS
  - BRMS (Backup, Recovery, & Media Services) 5761BR1
  - IBM Performance Tools for i5/OS (DiskWatcher) 5761PT1
  - IBM Performance Tools for i5/OS (JobWatcher) 5761PT1 option 3

# IBM Systems Director Navigator for i5/OS – Does not include

- **Management Central** capabilities
  - Only one system at a time
  
- **Database** visual tasks
  - SQL Scripts
  - Visual Explain
  - Database Navigator
  - SQL Assist
  
- **Disk Management** visual tasks
  - Graphical View
  - Disk Unit Physical Location
  - Disk Unit/ASP Capacity chart

# IBM Systems Director Navigator for i5/OS – How it works?

- HTTP Admin server
- <http://system:2001>

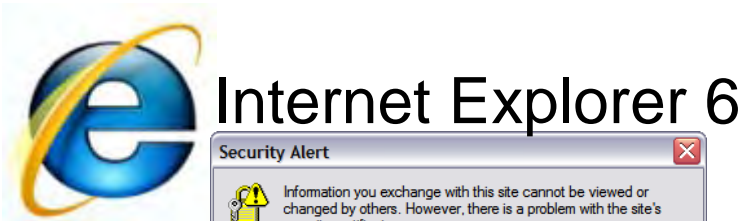


- **Supported web browsers**

- Microsoft® Internet Explorer, 6.0 or later
- Mozilla Firefox, 1.0 or later

# IBM Systems Director Navigator for i5/OS – How it works?

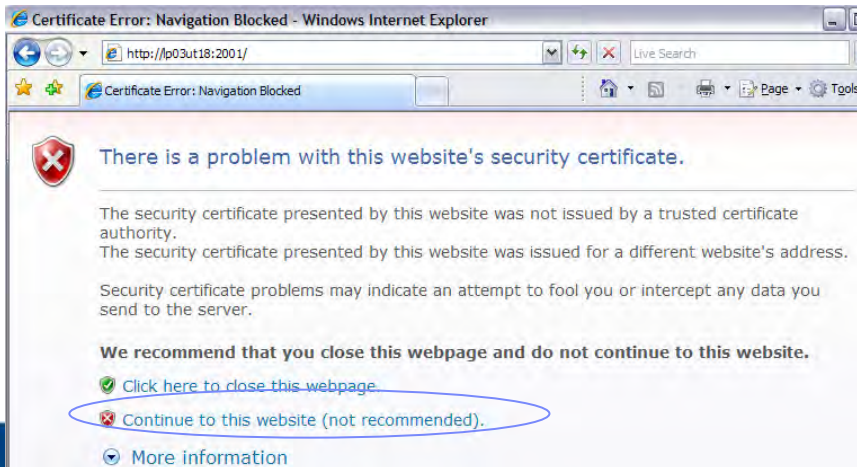
- SSL dialog for certificate



## Internet Explorer 6



## Internet Explorer 7

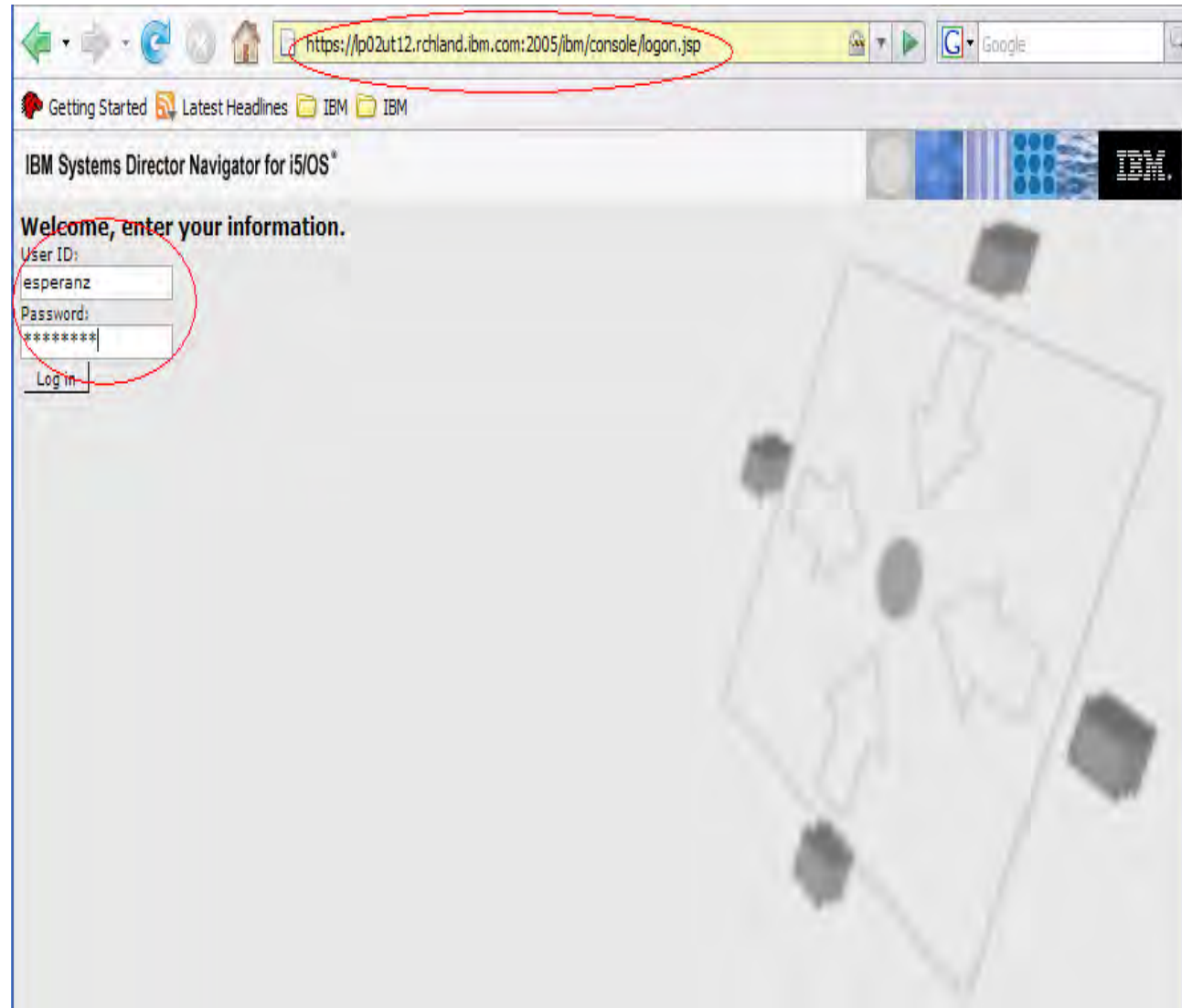


## Firefox 2



# IBM Systems Director Navigator for i5/OS – How it works?

- Secure address
- IBM i user profile authentication



# IBM Systems Director Navigator for i5/OS – How it works?

Interface displayed:

1. **“i5/OS Management”** displays categories
2. **Welcome page** for each category
3. **Common tasks** on the welcome page
4. **Show All Tasks** button for all of them
5. **New tab** for each task

IBM Systems Director Navigator for i5/OS<sup>®</sup> Welcome esperanz Help | Logout

- Welcome
- My Startup Pages
- i5/OS Management**
  - System
  - Basic Operations
  - Work Management
  - Configuration and Service
  - Network
  - Integrated Server Administration
  - Security
  - Users and Groups
  - Databases
  - Journal Management
  - Performance
  - File Systems
  - Internet Configurations
- Settings

System X

System - Lp02ut12.rchland.ibm.com

i5/OS System management allows you to perform general system level tasks.

- [System Status](#)  
Allows you to display the system's current status.
- [System Operator Messages](#)  
Allows you to display messages sent to the system operator.
- [History Log](#)  
Allows you to display the system's current history log.
- [Disk Status](#)  
Allows you to view the system's current disk status.
- [Run a Command](#)  
Allows you to run an i5/OS command.
- [Change Password](#)  
Allows you to change your system password, or, if authorized, another user's password.
- [Application Administration](#)  
Allows you to manage user's authorizations to i5/OS Navigator functions.

Show All System Tasks

Close

# IBM Systems Director Navigator for i5/OS – Interface

Grouping tasks into categories

Organizing tasks into tabs

IBM Systems Director Navigator for i5/OS\*    Welcome timmr    Help | Logout    IBM.

--- Select Action ---

Work Manage... X

i5/OS Management

- System
- Basic Operations
- Work Management
- Configuration and Service
- Network
- Integrated Server Administration
- Security
- Users and Groups
- Databases
- Journal Management
- Performance
- File Systems
- Internet Configurations
- Backup, Recovery and Media Services
- Cluster Resource Services

Settings

Work Management - Lp03ut18

i5/OS Work Management allows you to manage your i5/OS jobs, job queues, output queues, subsystems, and memory pools.

- Active Jobs**  
Allows you to work with all jobs that are currently active.
- Server Jobs**  
Allows you to manage server jobs that are currently active.
- Active Job Queues**  
Allows you to manage the job queues that are currently active, and the jobs that are located on these queues.
- Output Queues**  
Allows you to manage output queues.
- Active Subsystems**  
Allows you to manage the subsystems that are currently active, and the jobs that are running in these subsystems.
- Active Memory Pools**  
Allows you to manage the memory pools that are currently active, and the jobs that are located in these pools.

Show All Work Management Tasks

Help link

Common tasks

All tasks

# System i Navigator, System i Navigator Tasks for the Web and IBM Systems Director Navigator for i5/OS

	<b>System i Navigator</b>	<b>System i Navigator Tasks for the Web</b>	<b>IBM Systems Director Navigator for i5/OS</b>
<b>Installation</b>	<a href="#">View requirements</a>	Browser	Browser
<b>Management</b>	Multiple systems (central system / endpoint system)	Multiple systems (source system / target system)	Single system
<b>Interface</b>	Consistent		
<b>Updates</b>	Install service pack on every PC	Apply PTF on IBM i	Apply PTF on IBM i
<b>Tasking</b>	Multi-task*		

## Links

- <http://www-03.ibm.com/systems/i/software/navigator/index.html>
- <http://publib.boulder.ibm.com/infocenter/systems/scope/i5os/index.jsp>

Thanks!

## System i Navigator – Minimum Requirements

- 850MHz processor
- 512 MB RAM (1GB desirable)
- 300MB free disk space

Supported operative systems:

Windows XP (32 – 64 bit PC)

Windows Server 2003 (32 – 64 bit PC)

Windows Vista (32 – 64 bit PC)

[Back](#)

# Trademarks and Disclaimers

© IBM Corporation 1994-2008. All rights reserved.

References in this document to IBM products or services do not imply that IBM intends to make them available in every country.

Trademarks of International Business Machines Corporation in the United States, other countries, or both can be found on the World Wide Web at <http://www.ibm.com/legal/copytrade.shtml>.

Adobe, Acrobat, PostScript and all Adobe-based trademarks are either registered trademarks or trademarks of Adobe Systems Incorporated in the United States, other countries, or both.

Intel, Intel logo, Intel Inside, Intel Inside logo, Intel Centrino, Intel Centrino logo, Celeron, Intel Xeon, Intel SpeedStep, Itanium, and Pentium are trademarks or registered trademarks of Intel Corporation or its subsidiaries in the United States and other countries.

Linux is a registered trademark of Linus Torvalds in the United States, other countries, or both.

Microsoft, Windows, Windows NT, and the Windows logo are trademarks of Microsoft Corporation in the United States, other countries, or both.

IT Infrastructure Library is a registered trademark of the Central Computer and Telecommunications Agency which is now part of the Office of Government Commerce.

ITIL is a registered trademark, and a registered community trademark of the Office of Government Commerce, and is registered in the U.S. Patent and Trademark Office.

UNIX is a registered trademark of The Open Group in the United States and other countries.

Cell Broadband Engine and Cell/B.E. are trademarks of Sony Computer Entertainment, Inc., in the United States, other countries, or both and are used under license therefrom.

Java and all Java-based trademarks are trademarks of Sun Microsystems, Inc. in the United States, other countries, or both.

Other company, product, or service names may be trademarks or service marks of others.

Information is provided "AS IS" without warranty of any kind.

The customer examples described are presented as illustrations of how those customers have used IBM products and the results they may have achieved. Actual environmental costs and performance characteristics may vary by customer.

Information concerning non-IBM products was obtained from a supplier of these products, published announcement material, or other publicly available sources and does not constitute an endorsement of such products by IBM. Sources for non-IBM list prices and performance numbers are taken from publicly available information, including vendor announcements and vendor worldwide homepages. IBM has not tested these products and cannot confirm the accuracy of performance, capability, or any other claims related to non-IBM products. Questions on the capability of non-IBM products should be addressed to the supplier of those products.

All statements regarding IBM future direction and intent are subject to change or withdrawal without notice, and represent goals and objectives only.

Some information addresses anticipated future capabilities. Such information is not intended as a definitive statement of a commitment to specific levels of performance, function or delivery schedules with respect to any future products. Such commitments are only made in IBM product announcements. The information is presented here to communicate IBM's current investment and development activities as a good faith effort to help with our customers' future planning.

Performance is based on measurements and projections using standard IBM benchmarks in a controlled environment. The actual throughput or performance that any user will experience will vary depending upon considerations such as the amount of multiprogramming in the user's job stream, the I/O configuration, the storage configuration, and the workload processed. Therefore, no assurance can be given that an individual user will achieve throughput or performance improvements equivalent to the ratios stated here.

Prices are suggested U.S. list prices and are subject to change without notice. Contact your IBM representative or Business Partner for the most current pricing in your geography.